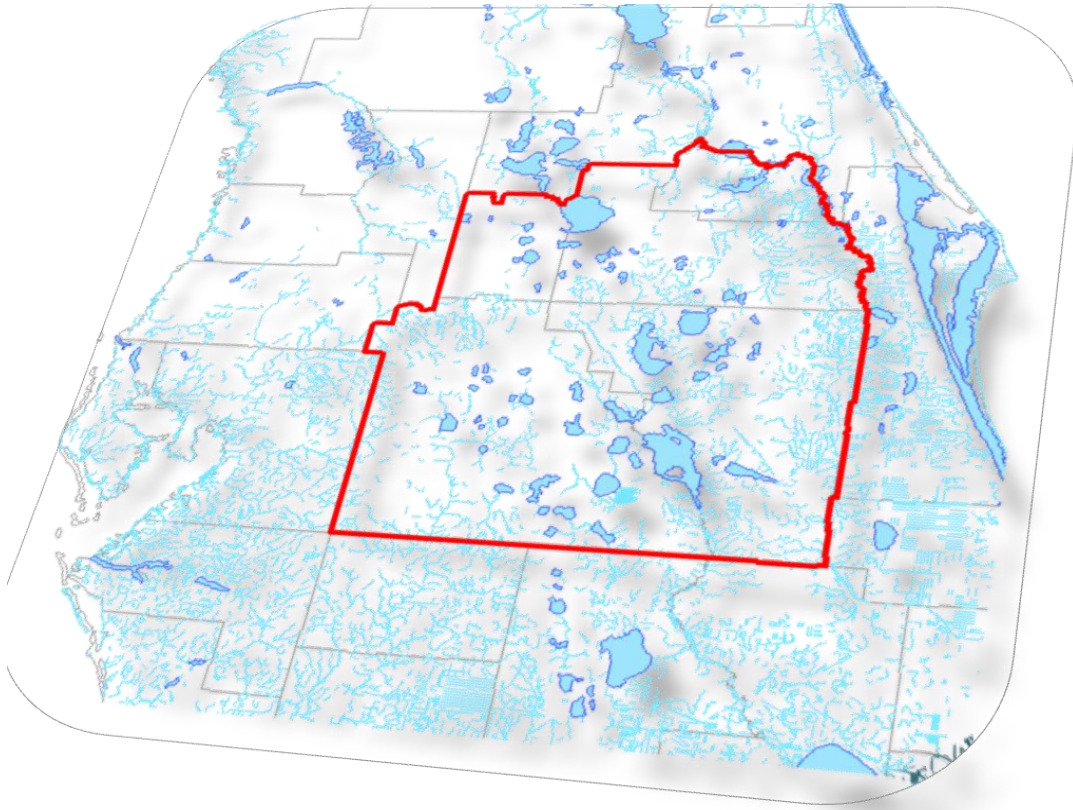


# CENTRAL FLORIDA WATER INITIATIVE 2020



*Continuing the collaborative regional water supply endeavor to protect, conserve and restore our water resources*

*The CFWI 2020 document is a constantly evolving document. It is intended to describe the collaborative process being implemented in Central Florida. As such, this version reflects the process underway as of the date shown. Through adaptive management principles it will be revised as appropriate under direction of the CFWI Steering Committee.*

---

# CENTRAL FLORIDA WATER INITIATIVE 2020 GUIDING DOCUMENT

---

## **Preface**

To extend the effort for more effective, consistent water resource planning, development and management, the Central Florida Water Initiative will continue. This update will incorporate the findings of the previous CFWI 2015 effort and will incorporate the “Next Steps” recommended in that plan together with subsequent direction from the Florida Legislature, the Water Management District Governing Boards and the Steering Committee. The development of consistent rules, along with a timetable for rulemaking, will be undertaken to meet the recommendations. The geographic area covered by the CFWI is shown in Figure 1 in the Appendix.

## **CFWI 2015**

Through the completed Central Florida Water Initiative 2015 (CFWI 2015), the St. Johns River Water Management District, South Florida Water Management District, and Southwest Florida Water Management District worked collaboratively with other agencies and stakeholders to develop a framework to implement effective water resource planning, including water resource and supply development and management strategies to protect, conserve, and restore our water resources. This effort used a unified process to address central Florida’s current and long-term water supply needs.

The CFWI 2015 identified measures to achieve water resource sustainability in the CFWI Planning Area that will require ongoing action by the Districts and stakeholders. The implementation process will require continued commitment and collaboration to initiate and realize the key findings and recommendations of the 2015 CFWI Regional Water Supply Plan (2015 CFWI RWSP). The 2015 CFWI RWSP included the following documents:

- 2015 CFWI RWSP (Volume I);
- Appendices to Volume I (Volume IA);
- Solutions Strategies (Volume II); and
- Appendices to Volume II (Volume IIA).

The following recommendations of the 2015 CFWI RWSP will guide future water supply solutions and be addressed in the next phase of the effort, the CFWI 2020. When followed, the

region will be on a path to ensure that future water demands are met while protecting water resources and related natural systems. Recommended actions for implementing the CFWI 2015 planning effort include the following:

- Implement Water Conservation Programs
- Develop Specific Prevention and Recovery Strategies
- Support Development and Implementation of Regional Project Solutions
- Support Additional Alternative Water Supply (AWS) Projects
- Improve Water Resource Assessment Tools and Supporting Data
- Develop Options for Consistent Rules and Regulations
- Continue Communication and Outreach
- Identify Options for Future CFWI Framework to Support Implementation Strategies

## The Continuing Collaborative Process

---

To provide for the continuation of the collaborative process in the CFWI area among the state agencies, affected WMDs, regional public water supply utilities, and other stakeholders the CFWI process will continue through 2020. The next phase will be called the Central Florida Water Initiative 2020 (CFWI 2020) and will be guided by the following principles and goals.

### **CFWI 2020 Guiding Principles**

1. Review and update the 2015 CFWI RWSP as well as the sustainable quantities of traditional groundwater sources available in the CFWI area that can be used without causing unacceptable harm to the water resources and associated natural systems.
2. Monitor progress of regional strategies and solutions identified in the 2015 CFWI Plan; review and update strategies to meet water demands that are in excess of the sustainable yield of existing traditional groundwater sources.
3. Establish consistent rules and regulations for the three water management districts that meet the Collaborative Process Goals and implement the results of this Central Florida Water Initiative.
4. Encourage funding for regional strategies necessary to achieve the objectives of the CFWI.

### **Collaborative Process Goals**

1. Update the single hydrologic planning model used to assess the availability of groundwater.

2. A single, uniform definition of “harmful to the water resources” consistent with its usage in section 373.219, Florida Statutes.
3. One reference condition as used in the ECFT planning model. Other reference conditions for addressing harm, MFLs and other needs of the region may be identified in the future as part of this process.
4. A single process for permit reviews.
5. A single, consistent process, as appropriate, to set MFLs and water reservations.
6. An updated single multidistrict regional water supply plan, including any needed recovery or prevention strategies and a list of water resource or supply development projects.
7. Address other directives enacted by the Florida Legislature.

The process will provide flexibility for cases where Recovery Strategies have been adopted, such as for the Southern Water Use Caution Area in the SWFWMD.

## Central Florida Water Initiative Governance

---

The relational hierarchy for the Central Florida Water Initiative 2020 is as follows (see Figure #2 in the Appendix):

### **Steering Committee**

This is the primary oversight committee comprised of a cross section of water supply partners meeting regularly to guide a coordinated effort to fulfill the Guiding Principles and Collaborative Process Goals of the CFWI. The Steering Committee shall provide guidance and direction to the Management Oversight Committee and collaborative technical teams and regarding the efforts of each of those groups.

The Steering Committee shall conduct its meetings in accordance with the requirements of Section 286.011, Florida Statutes (the “Sunshine Law”). All meetings of the Steering Committee shall be open to the public at all times. The Steering Committee shall provide reasonable notice of all of its meetings in accordance with the Sunshine Law.

The Steering Committee shall be Chaired by an appointee of the Secretary of the Department of Environmental Protection and comprised of the following members:

- Utilities - A public water supply utilities representative
- WMDs - One designated Governing Board Member from each of the WMDs

- FDEP - One designated FDEP representative
- FDACS - One designated FDACS representative

The findings and recommendations of the Steering Committee will be presented for evaluation, assessment and guidance for the initiation of rulemaking to the Governing Boards and/or the Florida Department of Environmental Protection as appropriate.

### **Management Oversight Committee (MOC)**

The Steering Committee will appoint members of the Management Oversight Committee who will provide regular oversight to Technical Teams (described below) in order to ensure a coordinated effort is maintained. The MOC is comprised of representatives of the executive management teams from each of the representative entities serving on the Steering Committee and an agricultural representative. The MOC will meet on an ad hoc basis between meetings of the Steering Committee on issues of management and coordination. The Management Oversight Committee and the other Technical Teams will not operate as “Sunshine” committees, as their functions will be limited to fact finding and technical analysis. They will conduct fact-finding regarding the Guiding Principles and Collaborative Process Goals of the CFWI 2020 and provide options for implementation of the Guiding Principles and Collaborative Process Goals of the CFWI 2020. They will not make policy decisions or prioritize options. The Management Oversight Committee and Technical Teams shall obtain instruction from the Steering Committee regarding any potential policy issues that may arise as a result of their investigations. Final resolution of some of these issues may require Governing Board or Legislative resolution. Issues that have their genesis in laws or rules will need to be clearly identified as such when brought before the Steering Committee.

The Chair of the Management Oversight Committee shall be designated by the Steering Committee.

- Utilities - A public water supply utilities representative
- WMDs - One designated Executive representative from each of the WMDs
- FDEP - One designated FDEP representative
- FDACS - One designated FDACS representative
- Environment - One environmental stakeholder representative
- Agriculture - One designated agricultural representative

## Public Input

A key objective of the Central Florida Water Initiative 2020 will be to seek input from other interested parties in a regularly scheduled open forum at each meeting of the Steering Committee.

## Technical Collaborative Teams

---

To continue the process of enhancing the strong technical foundation started in previous efforts that will be necessary to achieve the Guiding Principles and Collaborative Process Goals, Technical Teams will work together collaboratively refining and developing the ongoing technical work. The Technical Teams will not operate as “Sunshine” committees, as their functions will be limited to fact finding and technical analysis. They will conduct fact-finding regarding the Guiding Principles and Collaborative Process Goals of the CFWI 2020 and provide options for implementation of the Guiding Principles and Collaborative Process Goals of the CFWI 2020. They will not make policy decisions or recommendations or prioritize options. The Technical Teams shall obtain guidance and direction from the Steering Committee regarding any potential policy issues that may arise as a result of their investigations. The Technical Teams are shown below. The membership of individuals assigned to each Technical Team including the Team Leader shall be proposed by the MOC with final approval by the Steering Committee.

Each Technical Collaborative Team will have a work plan and schedule to accomplish their effort and, when needed for timeliness and efficiency, the Technical teams may create Sub Teams. Sub Team membership will not require Steering Committee approval. Each Technical Team will be expected to present their progress as needed in a Steering Committee meeting.

### 1. Conservation

Continue the effort to advance conservation beyond the estimates established in the RWSP.

### 2. Regulatory

Support CFWI 2020 Guiding Principle three to “establish consistent rules and regulations for the three water management districts that meet the Collaborative Process Goals and implement the results of this Central Florida Water Initiative,” consistent with the statutory directive for the development of uniform rules for application within the CFWI in s. 373.0465(2)(d), F.S.

### **3. Regional Water Supply Plan**

Update the water supply demand projections by December 2017. Update and implement the single multidistrict regional water supply plan, including incorporation of needed recovery or prevention strategies and the identification of sustainable water supply programs and projects. Monitor and report progress on the CFWI Programs and projects identified in the 2015 CFWI RWSP.

### **4. Water Resource Assessments**

Review any needed recovery or prevention strategies. Update the East Central Florida Transient model by December 2017. Continue the effort to implement the next steps from the 2015 CFWI RWSP not specifically assigned to one of the existing Collaborative Technical Teams. Ensure technical coordination between the teams.

### **5. Communication & Outreach**

Develop programs to address the “next step” recommendations from the Phase 2 Community Outreach and Consensus Report.

## **Conservation Team Scope of Work**

### **Leader:**

Christine Morris, FDEP

### **Background:**

The Conservation Team was originally formed as a Subteam of the CFWI 2015 Water Supply Planning Team, with the charge of producing estimates of the amount of conservation which could be achieved to reduce the 2035 projected demands. The group continued its work to assist the Solutions Planning Team by further refining the estimates and analysis for inclusion in Volume II of the Regional Water Supply Plan: 2035 Water Resources Protection and Water Supply Strategies (2015).

The 2015 CFWI RWSP concluded that based on achievable water conservation rates, the future demand could be reduced by 37 MGD or more through conservation. Of this, approximately 76 percent could be conserved by public supply utilities, 12 percent by agricultural users, and 12 percent by other self-supplied users. A key recommendation for the “next steps” for conservation in the 2015 CFWI RWSP is for the “formulation of a CFWI comprehensive conservation implementation scope of work that includes voluntary and incentive-based initiatives, research, education and outreach initiatives, and regulatory initiatives to achieve these savings.”

In formulating the structure for the next phase of the CFWI (CFWI 2020), the Steering Committee recognized the importance of water conservation and determined that a Conservation Team should be included as one of the main technical teams reporting directly to the Management Oversight Committee (MOC). The Steering Committee also directed this Team to “continue to advance conservation beyond the estimates established in the 2015 CFWI RWSP.”

**Goal:**

Continue the effort to advance conservation beyond the estimates established in the RWSP.

**Approach:**

The Conservation Team will consist of a representative from both DEP and DACS, a representative from each of the three water management districts, two water supply utility representatives, a self-supply representative, a representative from agriculture, a representative from the environmental community and a representative of the business community.

Two Subteams will be established to focus on water conservation for the primary user group categories of public supply and agriculture. The Subteams will be responsible for conducting technical work and bringing draft products and options to the Conservation Team for consideration. Other topics falling outside the scope of the two Subteams, such as savings by domestic water users and other self-supply, will be addressed directly by the Conservation Team.

**Objective:**

Develop options for an implementation strategy to achieve greater than the 37 MGD of water savings identified in the 2015 CFWI RWSP.

**Scope of Work:**

1. Using the analysis and options from the Subteams, the Conservation Team will develop an Implementation Strategy to achieve greater than the 37 MGD savings identified in the 2015 CFWI RWSP.
  - a. Identify and assess the status of BMPs since 2010, as well as the remaining savings potential for BMPs to be implemented. Information will be gathered from water users/suppliers, agency funding programs, existing water conservation-related databases, etc.
  - b. Identify ongoing funding programs that support additional BMP implementation, and options for increasing the effectiveness of the



existing programs. Information will be gathered from water users/suppliers, agency funding programs, etc.

- c. Identify geographic priority target areas for selected BMPs where the greatest savings, and water resource benefits where applicable, are likely to be achieved, and options and costs for achieving the savings.
2. Coordinate with the Regulatory Team, as needed, on water conservation-related tasks.
3. Coordinate with the Communications and Outreach Team on a Water Conservation Education and Outreach initiative.
4. Provide Quarterly updates to MOC on Conservation Team progress.
5. Explore the use of H<sub>2</sub>OSAV data or other data repository in the development of the implementation strategy and the RWSP Update. Share information from the work with stakeholders, the MOC, and the Steering Committee.
6. Update the water conservation estimates for achievable water conservation, and produce a draft Water Conservation Chapter for the 2020 CFWI RWSP, consistent with the schedule established by the 2020 Regional Water Supply Planning Team, which summarizes the work and analysis of the Conservation Team.

## Schedule

- **Subteam Scopes of Work:** Conservation Team approval of Subteam scopes of work, including interim deliverables/schedule – April 15, 2016.
- **SOW 1:** Complete draft options for implementation strategies to achieve greater than the 37 MGD of water savings identified in the 2015 CFWI RWSP for MOC consideration – June 2017. Complete implementation strategy final draft – February 2018.
- **SOW 2:** Continuous.
- **SOW 3:** Continuous.
- **SOW 4:** Continuous.
- **SOW 5:** Continuous.
- **SOW 6:** Provide draft Water Conservation Chapter to the 2020 RWSP Team - August 2018 or consistent with the schedule established by the 2020 RWSP Team.

## **Regulatory Team Scope of Work**

### **Leader:**

Kristine Morris, FDEP

### **Background:**

The Regulatory Team (RT) was formed to assist in the solutions planning process for the 2015 CFWI RWSP by identifying and addressing regulatory issues or constraints that could affect successful implementation of the projects identified by the Solutions Planning Team (SPT), develop options for consistent regulations, and carry out any additional assignments to support the SPT efforts. The RT has collaboratively shared ideas, information, alternatives, and responsibilities with the SPT under the guidance of the Steering Committee (SC) and Management Oversight Committee (MOC) to fulfill the Guiding Principles of the CFWI. Team membership has been comprised of regulatory staff from the Districts, FDEP, FDACS, public water supply utilities, and environmental group representatives. The RT has interacted with the other CFWI technical teams to evaluate regulatory options identified for ensuring sustainable water supplies. The RT provided drafting support for FDEP's Guidance Memo on Interim Consumptive Use Permitting within the CFWI Planning Area, which provided interim guidance to the Districts in implementing the CUP program and specifically addressed coordination on pending applications, permit duration, water conservation, proposed agency action documentation, and permit conditions. The RT has compiled monthly reports of pending consumptive use permit applications in the CFWI Planning Area and posted them for public view on [www.cfwiwater.com](http://www.cfwiwater.com).

### **Goal:**

After adoption of the RWSP, the goal of the RT now is to support CFWI 2020 Guiding Principle three to "establish consistent rules and regulations for the three water management districts that meet the Collaborative Process Goals and implement the results of this Central Florida Water Initiative," consistent with the statutory directive for the development of uniform rules for application within the CFWI in s. 373.0465(2) (d), F.S.

### **Approach:**

The RT is comprised of regulatory and legal staff from the South, Southwest, and St. John's Water Management Districts (WMDs); Florida Department of Environmental Protection (FDEP) representatives; a Florida Department of Agriculture and Consumer Services (FDACS) representative; public water supply utility representatives; an industrial/institutional/commercial self-supply representative and environmental group representatives. The RT will work under the guidance of the Steering Committee (SC) and Management Oversight Committee (MOC) to fulfill the Guiding Principles of the CFWI. The RT

will interact with the other CFWI teams to evaluate regulatory options identified for ensuring sustainable water supplies. The RT's approach will be a collaborative sharing of ideas, information, alternatives, and responsibilities.

**Objectives:**

The objectives of the RT are to develop options for consistent regulations as well as identify legislative changes, as needed, to implement the solution strategies identified in the CFWI process, to assist with resource recovery strategies, and to provide for equitable and predictable review of consumptive use permit applications among the Districts.

**Scope of Work:**

1. **Report consumptive use program data**
  - a. Coordinate with WMD representatives and continue to generate monthly reports of consumptive use permit applications.
2. **Regulatory and statutory options**
  - a. Identify options for uniform regulations and statutory changes as needed, addressing the following topics:
  - b. Conditions for Issuance
  - c. Uniform definition of harm
  - d. Uniform demand by use class
  - e. Uniform conservation requirements by use class
  - f. Use of MFLs and reservations in the permitting process
  - g. Single permitting model tool
  - h. Permitting thresholds
  - i. Permit conditions
  - j. Potential impacts outside of the CFWI boundary
3. **Assist with prevention and recovery strategies**
  - a. Assist WMDs with the development and regulatory implementation of prevention and recovery strategies as needed.
4. **Review regional strategies**
  - a. Provide regulatory review of updated regional strategies and solutions identified to meet water demands that are in excess of the sustainable yield of existing traditional groundwater sources.
5. **Report findings**
  - a. Present findings of the above evaluations to the Management Oversight Committee and Steering Committee.

**Schedule:**

The RT will provide products to the MOC and TOC in accordance with RWSP 2020 and legislatively mandated timeframes:

- Determine conceptual approach for rule options for each topic - June 1, 2016
- Provide initial draft rule language options for each topic - October 1, 2016
- Publish Notice of Rule Development for CFWI rules (DEP) - December 31, 2016

## **Regional Water Supply Plan Team Scope of Work**

### **Leader:**

Tammy Bader, SJRWMD

### **Background:**

Meeting the current and future demands of water users and the environment is part of the water management districts' core mission. Section 373.709, Florida Statutes (F.S.), requires water management districts to conduct water supply planning in regions where it determines that existing sources of water are not adequate to supply water for all existing and future reasonable-beneficial uses and to sustain the water resources and related natural systems for the planning period. Guided by the Steering Committee (SC), several technical teams were created as part of the development of the 2015 CFWI RWSP to collaboratively develop the supporting technical analysis necessary to achieve the CFWI 2015 Guiding Principles and Collaborative Process Goals (2015 Guiding Principles), including the CFWI RWSP Team.

Upon receipt of the then-available technical analysis from the technical teams, the CFWI Regional Water Supply Plan team drafted, completed and distributed the 2015 CFWI RWSP, which was approved by the three WMD governing boards in November 2015. Water supply plans are required to be updated at least once every five years pursuant to Section 373.709, F.S.

### **Goal:**

Update the water supply projections by December 2017. Update and implement the single multidistrict regional water supply plan, including any needed recovery or prevention strategies and the identification of sustainable water supply programs and projects. Monitor and report progress on the CFWI Programs and projects and identified in the CFWI 2015 Plan.

### **Approach:**

Team The CFWI RWSP Team will participate in a dynamic and collaborative process with the four other Technical Teams, as well as their various Subgroups, under the guidance of the SC and Management Oversight Committee (MOC), to develop the CFWI 2020 RWSP. To ensure information is shared in a timely manner during this dynamic and collaborative process, the

CFWI RWSP Team will hold regularly scheduled monthly meetings with associated CFWI Technical Teams and their various Subgroups.

The CFWI RWSP Team Subgroups will consist of the Population and Water Demand Subgroup and Water Supply and Resource Development Options Subgroup.

Subgroups of the Water Resource Assessment Team include Hydrologic Analysis, Environmental Measures, Minimum Flows and Levels and Reservations, Data / Monitoring and Investigations, and Prevention and Recovery. Subgroups of the Conservation Team include Agriculture, Public Supply and Self-supply.

The CFWI RWSP Team and any associated Subgroups will consist of staff from the St. Johns River, South Florida and Southwest Florida Water Management Districts, the Florida Department of Environmental Protection and the Florida Department of Agriculture and Consumer Services (FDACS). Staff from local governments, public supply utilities and permittees within the CFWI RWSP Planning Area will also participate on the CFWI RWSP Team. Our approach will be a collaborative sharing of ideas, information, strategies and responsibilities for achieving the 2020 Guiding Principles through frequent and efficient interactions among our team members and other teams.

**Objectives:**

1. Develop and oversee master schedule for completion and approval of the 2020 CFWI RWSP, including interim deadlines for completion of work by various Technical Teams and associated Subgroups.
2. Update the population and water demand projections for the CFWI Planning Area.
3. Assist in implementing the provisions of the 2015 CFWI RWSP (pursuant to Section 373.709(8)(a), F.S., notification to entities, and Section 373.711, F.S., technical assistance to local governments), to the extent possible.
4. Monitor and report progress annually on the CFWI programs and projects identified in the 2015 CFWI RWSP.
5. Along with the Water Resource Assessment Team, assist in reviewing the method for identifying the proportional share of impacts of all water use categories and documenting any needed recovery or prevention strategies. The role of the CFWI RWSP Team will be to work with the various Technical Teams to ensure deadlines are met and to document work products in the CFWI 2020 RWSP.
6. Update projects (and their respective status) identified in the 2015 CFWI RWSP and identify new potential sustainable water supply and water resource development programs and projects for inclusion into the 2020 CFWI RWSP.

7. Complete the 2020 CFWI RWSP by November 2020 consistent with the 2020 Guiding Principles.

**Scope of Work:**

The update to the 2015 CFWI RWSP is dependent on several factors, such as, population and water demand projections, resource evaluation criteria and water supply development options. Timely input from other collaborative Technical Teams is critical to ensure the 2020 CFWI RWSP is completed by November 2020.

The scope of work and preliminary schedule below take into account the relation between this effort and those of the collaborative Technical Teams, an example of which is the availability of an expanded and updated East-Central Florida Transient (X) Groundwater Flow Model. Completion of the model is necessary for updating predictions of changes to water resources due to projected water demands.

1. The CFWI RWSP Team will develop the overall schedule for completion and approval of the 2020 CFWI RWSP, including interim deadlines for completion of work by various Technical Teams and associated Subgroups.
  - a. The CFWI RWSP Team will coordinate with the Water Resource Assessment, Communication and Outreach, Regulatory, and Conservation Teams, as well as their various Subgroups, to obtain their respective schedules and develop an overall schedule of completion and approval of the 2020 CFWI RWSP.
  - b. The CFWI RWSP Team will hold regularly scheduled monthly meetings with associated CFWI Technical Team Leaders and their various Subgroup Leaders, when applicable, to ensure that schedules and deadlines are met.
  - c. The CFWI RWSP Team will communicate to the MOC and SC regarding the overall schedule and progress to complete the CFWI 2020 RWSP by November 2020 consistent with the 2020 Guiding Principles.
2. The Population and Water Demand Subgroup of the CFWI RWSP Team will investigate options for consistent methodologies for projecting water demand for each water use class in five-year increments, and will update the 2015 CFWI RWSP population and water demand projections, as well as reclaimed water availability projections, through 2040.
  - a. Water use categories will include public supply, domestic self-supply and small public supply systems, agricultural irrigation self-supply, landscape/recreation/aesthetic self-supply,

- commercial/industrial/institutional and mining/dewatering self-supply and thermoelectric power generation self-supply.
- b. The projections shall be performed based on the provisions of Section 373.709(2), F.S.
  - c. The CFWI RWSP Population and Water Demand Subgroup will reach agreement on the methodology option, which will be presented to the MOC and SC for projecting and distributing water demand and population in the CFWI RWSP Planning Area.
  - d. The Population and Water Demand Subgroup will coordinate with the Regulatory Team's Uniform Demand Calculation Public Supply Subgroup to create consistency in methodology options for public supply population and per capita calculations, where possible. Agricultural water demand projections will be developed by FDACS.
3. The CFWI RWSP Team will assist in implementing the provisions of Section 373.709(8)(a), F.S. (notification to entities) and Section 373.711, F.S. (technical assistance to local governments), where it applies to 2020 CFWI RWSP.
  4. The CFWI RWSP Team will annually monitor and report progress on the CFWI programs and projects identified in the 2015 CFWI RWSP.
  5. The CFWI RWSP Team will assist the Water Resource Assessment Team, to document any needed recovery or prevention strategies, as identified in the CFWI 2015 RWSP water resource assessment analyses. The role of the CFWI RWSP Team will be to work with the Water Resource Assessment Team to ensure deadlines are met and to document work products in the 2020 CFWI RWSP.
  6. The CFWI RWSP Water Supply and Resource Development Options Subgroup will update projects in the 2015 CFWI RWSP and identify new potential sustainable water supply and water resource development programs and projects (including regional project solutions), for inclusion into the 2020 CFWI RWSP.
    - a. The evaluation will include additional water supply development options, and consensus will be reached on a methodology option for identifying the source of the potential water supply, developing a description of project components, yield, cost estimates, water resource constraints (MFLs), supply entity(ies), feasibility and permitability, funding analysis and public interest. This will ensure the 2020 CFWI RWSP complies with Section 373.709(2) (a) (3), F.S.
    - b. The evaluation will include additional water resource development options, and consensus will be reached on a methodology option for identifying water resource development projects and the sources of potential supply, project description components, yield of water made

available and cost estimates, water resource constraints (e.g., MFLs), supply entity(ies), feasibility and permitability, funding analysis and public interest. This will ensure the CFWI 2020 RWSP complies with Section 373.709(2)(b), F.S.

- c. The CFWI RWSP Team will also coordinate with the Conservation Team and its respective Subgroups to incorporate any new or changed conservation practices and estimates for public supply, agriculture and self-supply into the 2020 CFWI RWSP.
7. The CFWI RWSP Team will develop the 2020 CFWI RWSP to reflect the 2020 Guiding Principles by November 2020.
- a. In conjunction with the Communication and Outreach Team, the CFWI RWSP Team will conduct public workshops and meetings on the 2020 CFWI RWSP to review the methods used to update the 2015 CFWI RWSP and solicit public input on the 2020 CFWI RWSP.
  - b. The CFWI RWSP Team will provide comments and options to the CFWI MOC and SC and incorporate any changes to the 2020 CFWI RWSP.

**Schedule:**

- **SOW 1:** Completion by May 2016, ongoing
- **SOW 2:** Completion by December 2017
- **SOW 3:** To be determined, ongoing
- **SOW 4:** To be determined, ongoing
- **SOW 5:** To be determined
- **SOW 6:** Completion by December 2018
- **SOW 7:** Draft 2020 CFWI RWSP by May 1, 2019

## **Water Resource Assessment Team Scope of Work**

**Leader:**

Brian Starford, SWFWMD

**Background:**

After adoption of the RWSP and completion of 2015 CFWI, the Water Resource Assessment Team (WRAT) was established to support the 2020 CFWI Guiding Principles.

**Goal:**

Review any needed recovery or prevention strategies. Update the East Central Florida Transient model by December 2017. Continue the effort to implement the next steps from the



2015 CFWI Plan not specifically assigned to one of the existing Collaborative Technical Teams. Ensure technical coordination between the teams.

**Approach:**

The Water Resource Assessment Team will work in a collaborative environment with the Communications, Conservation, Regulatory, and RWSP teams and under the guidance of the Steering Committee and Management Oversight Committee. The Hydrologic Analysis, Environmental Measures, Data Monitoring and Investigations, and MFLs and Reservations teams from the CFWI 2015 will continue as Subteams for the CFWI 2020 and will be coordinated through the Water Resource Assessment Team.

**Objectives:**

1. Review any needed prevention or recovery strategies;
2. Track progress of HAT in updating the East Central Florida Transient model by December 2017;
3. Review DMIT annual report;
4. Review status of 2015 CFWI Plan “next steps” and report to MOC
5. Review EMT Activities; and
6. Support the Communications, Conservation, Regulatory, and RWSP teams as needed.

**Scope of Work:**

1. **Prevention or recovery strategies.** Coordinate with water management districts to identify any needed activities.
2. **Track progress of HAT update of ECFT model.** Track progress of HAT update of ECFT model and provide necessary support and assistance.
3. **Review DMIT Annual Report.** Review DMIT annual report and provide necessary support and assistance.
4. **Review status of 2015 CFWI Plan “next steps” and report to MOC.** Review progress of “next steps” not assigned to other Collaborative Technical Teams and report to MOC each year.
5. **Review EMT Activities.** Track progress of EMT’s re-evaluation of a sample of Class II wetlands (assessment of stressed/not stressed) and any as needed assistance to the HAT sub-team and Regulatory Team
6. **Support the Communications, Conservation, Regulatory, and RWSP teams as needed.** As needed, meet with the other Collaborative Technical Team Leaders and Teams to identify issues, outline a scope and schedule, discuss with MOC as needed, and implement scope to address the necessary issues.

**Schedule:**

- **SOW 1:** Report progress to MOC each year by February
- **SOW 2:** The Hydrologic team will:
  - Begin calibration by August 2016
  - Complete calibration by June 2017
  - Finalize model documentation and peer review by November 2017
- **SOW 3:** The DMIT will provide annual status reports on the Five Year Work Plan to the Steering Committee by December of each year.
- **SOW 4:** Report progress to MOC each year by April.
- **SOW 5:** EMT to complete re-evaluation of a sample of Class II wetlands by June 2017 (will ask EMT to review schedule)
- **SOW 6:** Report to MOC by January of each year regarding proposed activities.

**Communication & Outreach Team Scope of Work****Leader:**

Tiffany Cowie, SJRWMD

**Background:**

Previous work by the Communications & Outreach Team accomplished extensive outreach and strategic engagement with stakeholder groups, local governments and the public. Continuing this work, plus next-step considerations identified in the Phase 2 Community Outreach and Consensus Report, provide the focus for 2016-2020.

**Goal:**

The Communications & Outreach Team will continue informing and engaging stakeholders and the general public over the next five years on the strategies, programs and project opportunities in the Central Florida Water Initiative (CFWI). This includes communications support to each of the CFWI technical teams plus developing specific programs and activities to support the goals of the Conservation Team.

**Team Approach:**

Develop and implement programs and activities to sustain stakeholder involvement with CFWI, including generating support and funding for projects. This will include project-specific activities as well as continued communications support via the [www.cfwiwater.com](http://www.cfwiwater.com) website; presentations to citizen groups, technical groups and local governments, including stakeholders

outside the CFWI boundary; and internal coordination with the technical teams for progress updates and targeted outreach as needed.

**Objectives:**

1. Showcase progress in the development of regional water supply projects.
2. Continue to address questions or concerns with the Regional Water Supply Plan and Solutions Strategies document.
3. Recognize the diverse needs of stakeholders both within and outside the boundaries of the CFWI area.
4. Emphasize water conservation as a priority.

**Scope of Work:**

1. Continue internal communication support for the technical teams and agencies.
2. Continue expansion of stakeholder and community education and communication, both within and beyond the CFWI boundary.
3. Develop/expand regional and state advocates for CFWI's ongoing work and, as needed, for implementation of specific projects.
4. Develop and implement a Water Conservation Education and Outreach Initiative in coordination with the Conservation Team.
5. Continue to update and maintain *cfwiwater.com* website

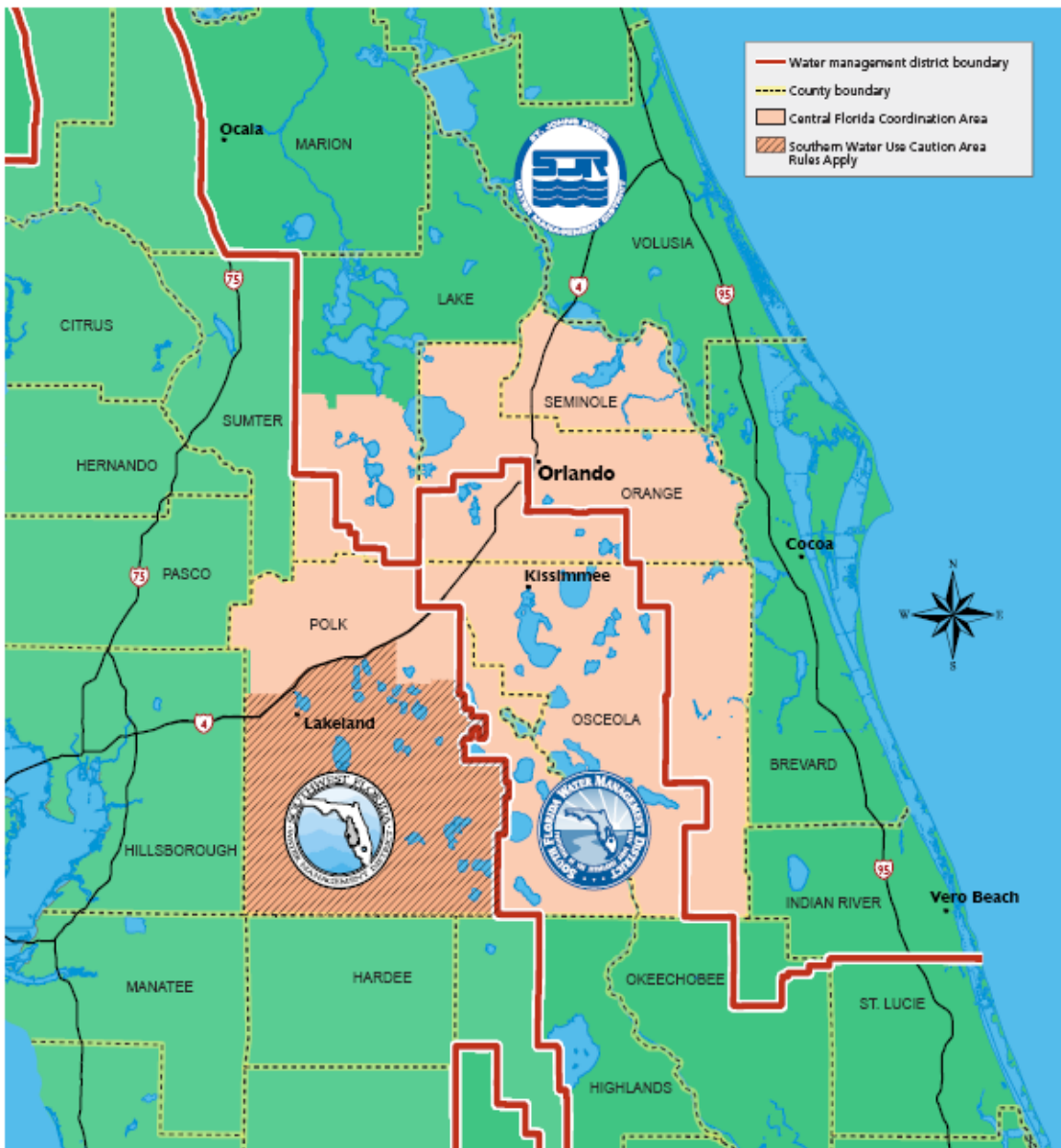
**Schedule:**

- **SOW 1 - 3:** Ongoing throughout the year. Project-specific tours/site visits (2-4 per year).
- **SOW 4:** Annual enhancements to the Water Conservation Education and Outreach program.
- **SOW 5:** Ongoing throughout the year.

# APPENDICES

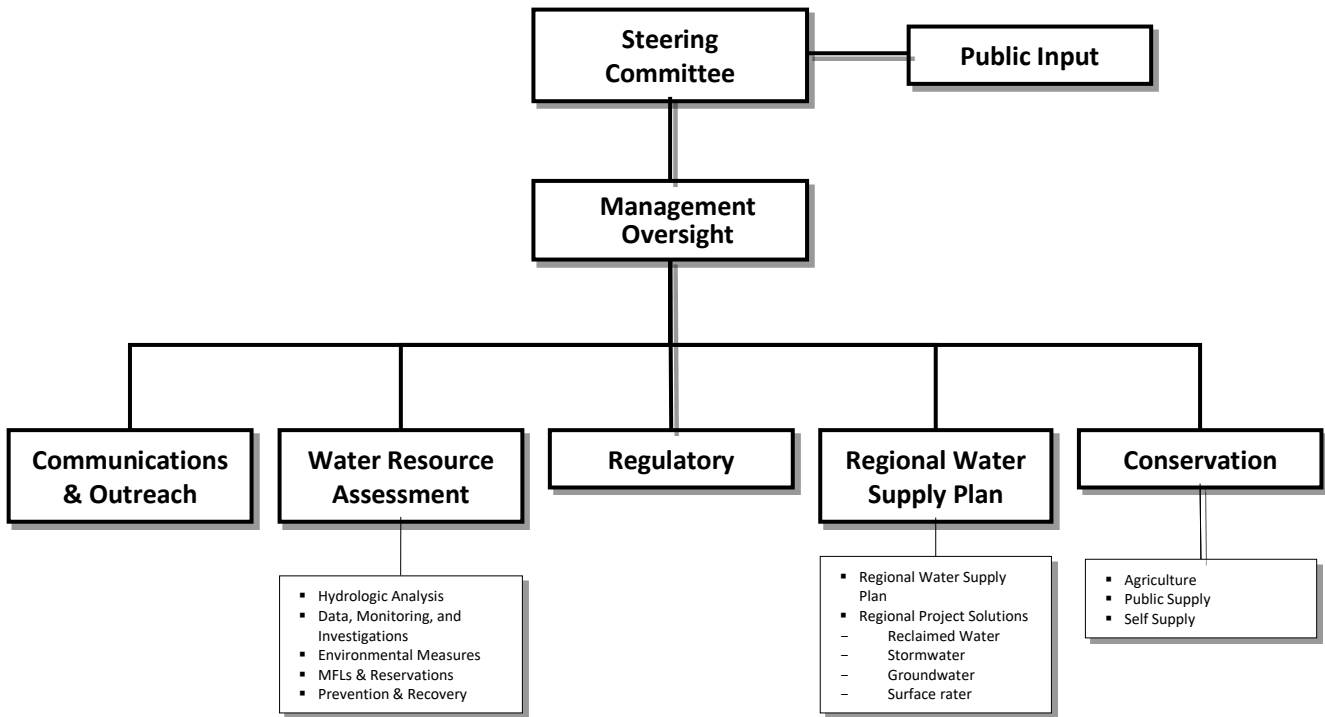
FIGURE 1

CFWI Area



# FIGURE 2

## Governance



OPERATIONAL PROCEDURES  
CENTRAL FLORIDA WATER INITIATIVE  
STEERING COMMITTEE

I. COMPOSITION

The composition of the Central Florida Water Initiative (CFWI) Steering Committee (SC) is described in the Central Florida Water Initiative Guiding Document to which this document is attached as an appendix. A member of the SC may provide one alternate for his or her seat on the SC upon written notice to the SC.

II. COORDINATION

- A. A Coordinator shall be selected from among the SC members by unanimous vote of the SC.
- B. The Coordinator is the presiding officer at meetings of the SC, and is to execute all documents authorized by the SC that may require his or her signature.
- C. The Coordinator may designate a SC member to serve as the meeting Moderator.

III. MEETINGS

- A. All meetings of the SC are subject to the Florida Sunshine Law. Alternate members, if any, are also subject to the Florida Sunshine Law. Such alternate(s) may, outside noticed meetings, discuss CFWI Steering Committee matters with their respective member(s), but not with other alternates or Steering Committee members. The public shall be allowed to comment on matters coming before the SC at appropriate times as determined by the Coordinator. The SC reserves the right to limit the public comment time to a specific length of time and to require speakers to fill out speaker cards. All meeting sites shall meet accessibility standards for public meetings.
- B. The SC shall meet at least quarterly or more frequently at the call of the Coordinator.
- C. An agenda for the meeting shall be prepared by the Coordinator or his or her designee and made available to the public in a manner consistent with the requirements of the Sunshine Law.
- D. The SC shall publish notice of its meetings in the Florida Administrative Weekly in a manner consistent with the requirements of the Sunshine Law. The contents of the notice shall conform to the template attached to these procedures.

IV. ACTIONS

Actions of the SC are to be recorded by the Coordinator in meeting minutes.

V. INSPECTION AND COPYING OF PUBLIC RECORDS

The inspection and copying of the SC public records will be in accordance with the Florida Public Records Law. CFWI and SC records shall be maintained and available for public inspection and copying at the offices of the Florida Department of Environmental Protection, 3900 Commonwealth Blvd, MS 23, Tallahassee, Florida 32399.

## VI. AMENDMENT

These operational procedures may be amended at any time at a meeting by a unanimous vote of the SC members.

## NOTICE TEMPLATE

The Central Florida Water Initiative (CFWI) Steering Committee consisting of a Governing Board member from each of the South Florida Water Management District, the Southwest Florida Water Management District, and the St. Johns River Water Management District, and a representative from each of the Florida Department of Environmental Protection, the Florida Department of Agricultural and Consumer Services and the Tohopekaliga (Toho) Water Authority, representing public water supply utilities within the Central Florida Coordination Area, announces a public meeting to which all persons are invited.

DATE AND TIME:

PLACE:

GENERAL SUBJECT MATTER TO BE CONSIDERED: The CFWI Steering Committee is a collaborative effort among government agencies formed to address water resource issues in the area known as the Central Florida Coordination Area. The CFWI Steering Committee will consider matters appearing on the agenda for the meeting or matters added to the agenda as determined by the Chairman of the Committee. Additional information about this effort may be found at: [cfwiwater.com](http://cfwiwater.com).

A copy of the agenda may be obtained by contacting: \_\_\_\_\_, or at <http://cfwiwater.com/> seven days prior to the meeting.

Pursuant to the provisions of the Americans with Disabilities Act, any person requiring special accommodations to participate in this workshop/meeting is asked to advise the agency at least 5 hours before the workshop/meeting by contacting: South Florida Water Management District Clerk, (800) 432-2045, ext. 2087 or (561) 682-2087. If you are hearing or speech impaired, please contact the agency using the Florida Relay Service, 1(800)955-8771 (TDD) or 1(800)955-8770 (Voice).

For more information, you may contact: \_\_\_\_\_, St. Johns River Water Management District, P.O. Box 1429, Palatka, Florida 32178-1429, 386/329-\_\_\_\_\_, \_\_\_\_\_@sjrwmd.com; \_\_\_\_\_, Southwest Florida Water Management District, 2379 Broad Street, Brooksville, Florida 34604-6899, 352/796\_\_\_\_\_, \_\_\_\_\_@swfwmd.state.fl.us; \_\_\_\_\_, South Florida Water Management District, 3301 Gun Club Road, West Palm Beach, Florida 33406, 561/682-\_\_\_\_\_, \_\_\_\_\_@sfwmd.gov; Craig Varn: Manson Bolves Donaldson Varn, P.A., 106 E. College Ave., Suite 820, Tallahassee, FL 32301, 850-583-0007.